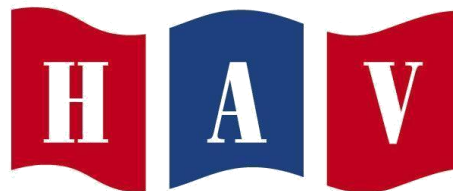
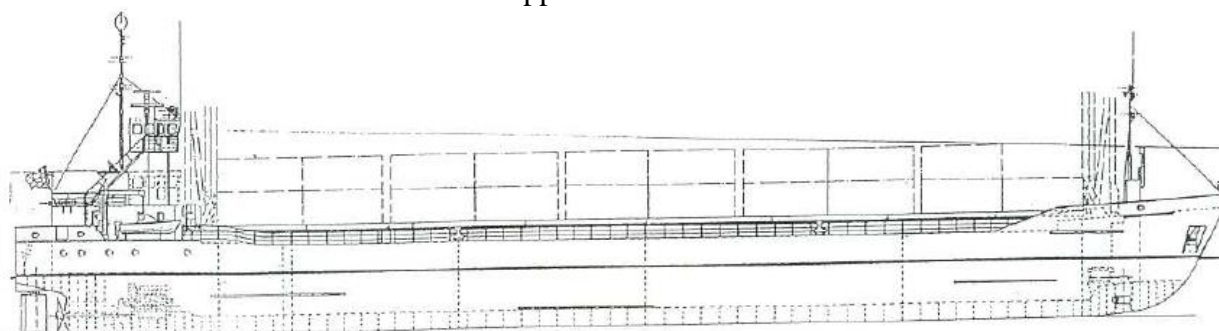


HAV SNAPPER

Callsign: C6XN4 - IMO 900 1813
 General Dry Cargo ship built 1991
 Bahamas Flag; P&I by Gard
 DNV-GL+100A5



Mobile captain: +47 480 51744
 Satellite phone: +87 0773 156 770
 E-Mail 1: snapper.hav@amosconnect.com
 E-Mail 2: snapper@hav.no



SHIP DETAILS

- all details about and without guarantee -

GT	1 961	Timbercapacity-LP	Abt 4000 (cbm)
NT	964		
LOA	88,16m	Slings	Upon request
Beam	12,50m	Air bags	Upon request
Draft summer	4,607m	Lashing belts	Upon request
DWT	3 014 mts		
DWCC-Summer	Abt 2850	Bulkhead	Frame No
DWCC - Winter	Abt 2750	Pos 1	30
Capacity of holds bale (cbm)	3 957	Pos 2	42
Capacity of holds bale (cbft)	139 729	Pos 3	68
Capacity of holds grain (cbm)	3 957	Pos 4	88
		Pos 5	100
Capacity of holds grain (cbft)	139 729	Pos 6	110
			Cu.ft from aft
			13.449
			31.076
			69.269
			109.252
			126.879
			139.729

Rudder type	Becker type	Min airdraft in heavy ballast (FW)/top of hatches	12,1mtrs
Bow thruster	Veth Jet 246kw	Max airdraft in heavy ballast	19,2 mtrs
Dept moulded	6,50mtr	Rhine/Seine/Saimaa fitted	No
Service speed (knots)	Abt 8,5-9kts	Fesi fitted	No
Consumption main engine (ltr/24hrs) with A/E	Abt 3900 ltrs per 24hrs	Ventilation - airchanges/hours	6
Port consumption (tons/24hrs)	0,3tons	Hatch type	Macor even top
Main engine type / output	Deutz/600kW	Hatch dimension /hatches closed/, (m)	63,35m x 10,4m
Propeller	Fixed pitch		
Max permissible loading on hatch covers (t/m2)	1,6tons	Hold dimensions L x B x H (m) Slightly narrowing fore and aft	62,68m x 10,1m x 6,336 m
Max permissible loading on tanktop ((t/m2) Tanktop strengthened for heavy cargo.	12,0tons	Height of hatchcover motors into the hold	0
Distance from waterline fully ballasted top of hatch coaming /hatches closed/, (m)	4,50mtr	Container capacity (TEU)	154TEU
Height of hatch coaming /hatches closed/, (m)	1,10mtr	Tank capacities:	
Distance from keel to top with antenna (m)	22,60mtr	Water ballast	1 467,1cbm
Distance from tank top to top of hatch coamings (m)	6,336mtrs	Gasoil	232,5cbm
Mean draft of ship in heavy ballast (m) (FW)	3 mtrs	Freshwater	66cbm